

TOOL HOLDER SYSTEM

SDAT DIN 69871-A
series



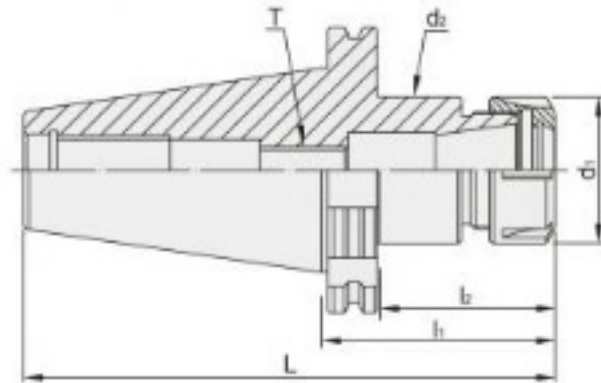


ห้างหุ้นส่วนจำกัด เลิศไพบุณย์ สตีล Lert Piboon Steel Ltd., Part.

SDAT / ER



T W PAT NO. M298033
 T W PAT NO. M311791
 J P PAT NO. 3128766
 K R PAT NO. 20-0433603
 C N PAT NO. ZL200620132661.0
 C N PAT NO. ZL200620103196.7
 C H PAT NO. 696550
 T R PAT NO. TR 2007 02942 Y
 I T PAT NO. N0000266731

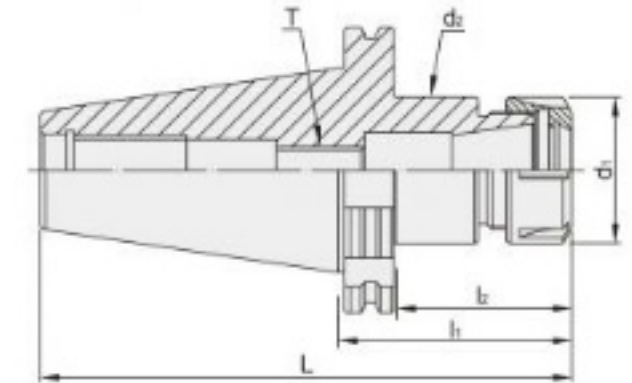


- Can clamp straight cutters and tools.
- The pre-balance can reach G6.3 10,000 rpm, without an inspection report.
- The balancing grade and revolution can be done according to customer's request but the additional charge is needed.

SDAT / ER



T W PAT NO. M298033
 T W PAT NO. M311791
 J P PAT NO. 3128766
 K R PAT NO. 20-0433603
 C N PAT NO. ZL200620132661.0
 C N PAT NO. ZL200620103196.7
 C H PAT NO. 696550
 T R PAT NO. TR 2007 02942 Y
 I T PAT NO. N0000266731



- Can clamp straight cutters and tools.
- The pre-balance can reach G6.3 10,000 rpm, without an inspection report.
- The balancing grade and revolution can be done according to customer's request but the additional charge is needed.

MODEL NO.	TYPE - l ₁	L	l ₂	d ₁	d ₂	T	SIZE RANGE	WEIGHT (KGS)				
66.122.11.080	SDAT40 x ER11A - 80	148.4	50	19	19	M6 x 1.0P	1.0 ~ 7.0	1.05				
66.122.11.125	SDAT40 x ER11A - 125	193.4	95					1.15				
66.122.16.070	SDAT40 x ER16A - 70	138.4	40	28	28	M10 x 1.5P	1.0 ~ 10	1.10				
66.122.16.100	SDAT40 x ER16A - 100	168.4	70					1.20				
66.122.16.125	SDAT40 x ER16A - 125	193.4	95					1.30				
66.122.16.150	SDAT40 x ER16A - 150	218.4	120					1.38				
66.122.16.180	SDAT40 x ER16A - 180	248.4	150					1.85				
66.122.20.070	SDAT40 x ER20A - 70	138.4	47					34	34	M12 x 1.75P	1.0 ~ 13	1.10
66.122.20.100	SDAT40 x ER20A - 100	168.4	70	1.30								
66.122.20.135	SDAT40 x ER20A - 135	203.4	105	1.95								
66.122.20.160	SDAT40 x ER20A - 160	228.4	130	2.20								
66.122.25.070	SDAT40 x ER25 - 70	138.4	50	42	42	M16 x 2.0P	1.0 ~ 16					1.20
66.122.25.100	SDAT40 x ER25 - 100	168.4	80									1.45
66.122.25.150	SDAT40 x ER25 - 150	218.4	130					2.25				
66.122.25.180	SDAT40 x ER25 - 180	248.4	160					2.45				
66.122.25.200	SDAT40 x ER25 - 200	268.4	180					2.00				
66.122.32.070	SDAT40 x ER32 - 70	138.4	50					50	50	M20 x 2.0P	2.0 ~ 20	1.30
66.122.32.100	SDAT40 x ER32 - 100	168.4	80	1.65								
66.122.32.135	SDAT40 x ER32 - 135	203.4	115	2.15								
66.122.32.150	SDAT40 x ER32 - 150	218.4	130	2.65								
66.122.40.070	SDAT40 x ER40 - 70	138.4	50	63	50	M20 x 2.0P	3.0 ~ 26					1.50
66.122.40.100	SDAT40 x ER40 - 100	168.4	80									2.00
66.122.40.135	SDAT40 x ER40 - 135	203.4	115					2.30				
66.122.40.100	SDAT40 x ER50 - 100	168.4	80					78	64	M24 x 2.0P	5.0 ~ 34	1.70

MODEL NO.	TYPE - l ₁	L	l ₂	d ₁	d ₂	T	SIZE RANGE	WEIGHT (KGS)
67.122.16.100	SDAT50 x ER16A - 100	201.75	70	28	28	M10 x 1.5P	1.0 ~ 10	3.20
67.122.16.135	SDAT50 x ER16A - 135	236.75	105					4.30
67.122.16.160	SDAT50 x ER16A - 160	261.75	130					4.50
67.122.16.180	SDAT50 x ER16A - 180	281.75	150					4.80
67.122.20.100	SDAT50 x ER20A - 100	201.75	70	34	34	M12 x 1.75P	1.0 ~ 13	3.40
67.122.20.135	SDAT50 x ER20A - 135	236.75	105					3.60
67.122.20.160	SDAT50 x ER20A - 160	261.75	130					3.80
67.122.25.070	SDAT50 x ER25 - 70	171.75	40					42
67.122.25.100	SDAT50 x ER25 - 100	201.75	70	3.54				
67.122.25.150	SDAT50 x ER25 - 150	251.75	120	4.50				
67.122.25.200	SDAT50 x ER25 - 200	301.75	170	4.70				
67.122.32.080	SDAT50 x ER32 - 80	181.75	50	50	50	M20 x 2.0P	2.0 ~ 20	3.60
67.122.32.120	SDAT50 x ER32 - 120	221.75	90					4.60
67.122.32.160	SDAT50 x ER32 - 160	261.75	130					4.60
67.122.32.200	SDAT50 x ER32 - 200	301.75	170					5.20
67.122.40.080	SDAT50 x ER40 - 80	181.75	50	63	60	M20 x 2.0P	3.0 ~ 26	3.65
67.122.40.120	SDAT50 x ER40 - 120	221.75	90					4.50
67.122.40.160	SDAT50 x ER40 - 160	261.75	130					5.20
67.122.40.200	SDAT50 x ER40 - 200	301.75	170					5.40
67.122.50.080	SDAT50 x ER50 - 80	181.75	57	78	78	M24 x 2.0P	5.0 ~ 34	4.85
67.122.50.120	SDAT50 x ER50 - 120	221.75	99					5.45
67.122.50.160	SDAT50 x ER50 - 160	261.75	139					5.55
67.122.50.200	SDAT50 x ER50 - 200	301.75	179					5.70



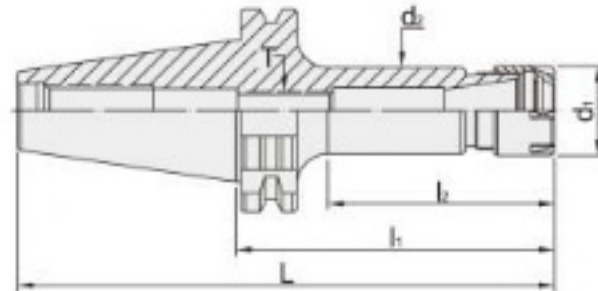


ห้างหุ้นส่วนจำกัด เลิศไพบุณ สตีล Lert Piboon Steel Ltd., Part.

SDAT / ER



T W PAT NO. M298033
 T W PAT NO. M311791
 J P PAT NO. 3128766
 K R PAT NO. 20-0433603
 C N PAT NO. ZL200620132661.0
 C N PAT NO. ZL200620103196.7
 C H PAT NO. 696550
 T R PAT NO. TR 2007 02942 Y
 I T PAT NO. N0000266731

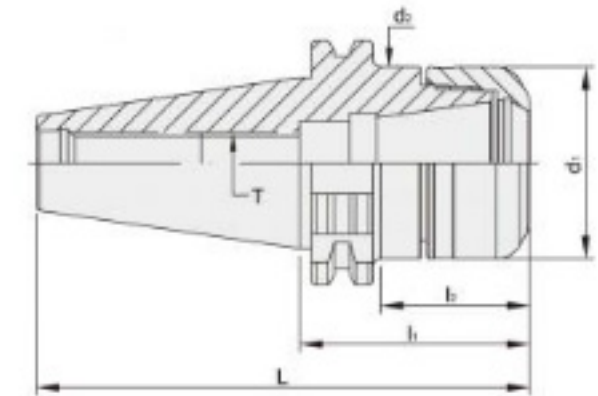


- The pre-balance can reach G6.3 10,000 rpm, without an inspection report.
- The balancing grade and revolution can be done according to customer's request but the additional charge is needed.

SDAT / PNER



T W PAT NO. M298033
 T W PAT NO. M311791
 J P PAT NO. 3128766
 K R PAT NO. 20-0433603
 C N PAT NO. ZL200620132661.0
 C N PAT NO. ZL200620103196.7
 C H PAT NO. 696550
 T R PAT NO. TR 2007 02942 Y
 I T PAT NO. N0000266731



- Runout accuracy: within 3µm.
- The gauge line of PNER collet is shorter, so PNER collet sits well in the PNER holder better than conventional ER collet chucks, which improves the overall runout accuracy of PNER collet chuck and stability of machining.
- Standard revolution: G2.5 25,000rpm, with an inspection report.

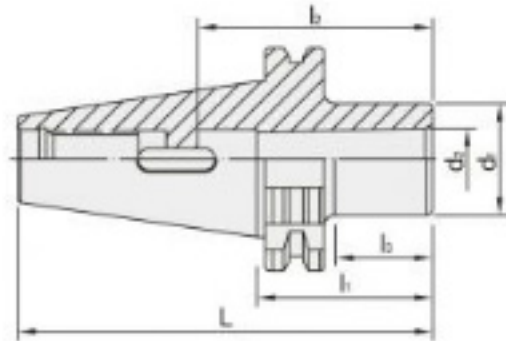
MODEL NO.	TYPE - l ₂	L	l ₂	d ₁	d ₂	T	SIZE RANGE	WEIGHT (KGS)
66.123.11.070	SDAT40 x ER11M - 70	138.4	40	16	15	M6 x 1.0P	1.0 ~ 7	1.10
66.123.11.100	SDAT40 x ER11M - 100	168.4	70					1.20
66.123.11.125	SDAT40 x ER11M - 125	193.4	95					1.40
66.123.11.150	SDAT40 x ER11M - 150	218.4	120					1.50
66.123.16.070	SDAT40 x ER16M - 70	138.4	40	22	21	M10 x 1.5P	1.0 ~ 10	1.20
66.123.16.100	SDAT40 x ER16M - 100	168.4	70					1.30
66.123.16.125	SDAT40 x ER16M - 125	193.4	95					1.50
66.123.16.150	SDAT40 x ER16M - 150	218.4	120					1.60
66.123.20.070	SDAT40 x ER20M - 70	138.4	40	28	27	M12 x 1.75P	1.0 ~ 13	1.20
66.123.20.100	SDAT40 x ER20M - 100	168.4	70					1.55
66.123.20.125	SDAT40 x ER20M - 125	193.4	95					1.70
66.123.20.150	SDAT40 x ER20M - 150	218.4	120					1.80
67.123.11.070	SDAT50 x ER11M - 70	171.75	40	16	15	M6 x 1.0P	1.0 ~ 7	3.8
67.123.11.090	SDAT50 x ER11M - 90	191.75	60					3.9
67.123.11.105	SDAT50 x ER11M - 105	206.75	56					4.0
67.123.11.135	SDAT50 x ER11M - 135	236.75	86					4.1
67.123.11.165	SDAT50 x ER11M - 165	266.75	94	4.2				
67.123.16.070	SDAT50 x ER16M - 70	171.75	40	22	21	M10 x 1.5P	1.0 ~ 10	3.9
67.123.16.090	SDAT50 x ER16M - 90	191.75	60					4.0
67.123.16.105	SDAT50 x ER16M - 105	206.75	68					4.1
67.123.16.135	SDAT50 x ER16M - 135	236.75	98					4.2
67.123.16.165	SDAT50 x ER16M - 165	266.75	128	4.3				
67.123.20.090	SDAT50 x ER20M - 90	191.75	60	28	27	M12 x 1.75P	1.0 ~ 13	4.1
67.123.20.105	SDAT50 x ER20M - 105	206.75	71					4.2
67.123.20.135	SDAT50 x ER20M - 135	236.75	101					4.4
67.123.20.165	SDAT50 x ER20M - 165	266.75	131					4.6

MODEL NO.	TYPE - l ₂	L	l ₂	d ₁	d ₂	T	SIZE RANGE	WEIGHT (KGS)
66.273.16.070	SDAT40 x PNER16 - 70	138.4	45.9	30	30	M10 x 1.5P	3.0 ~ 10	1.05
66.273.16.100	SDAT40 x PNER16 - 100	168.4	75.9					1.15
66.273.20.070	SDAT40 x PNER20 - 70	138.4	45.9	32	32	M12 x 1.75P	3.0 ~ 13	1.10
66.273.20.100	SDAT40 x PNER20 - 100	168.4	75.9					1.30
66.273.25.070	SDAT40 x PNER25 - 70	138.4	45.9	40	40	M16 x 2.0P	3.0 ~ 16	1.15
66.273.25.100	SDAT40 x PNER25 - 100	168.4	75.9					1.45
66.273.32.050	SDAT40 x PNER32 - 50	118.4	30.4	50	50	M16 x 2.0P	3.0 ~ 20	1.10
66.273.32.070	SDAT40 x PNER32 - 70	138.4	50.4					1.22
66.273.32.100	SDAT40 x PNER32 - 100	168.4	80.4	63	63	M20 x 2.0P	6.0 ~ 26	1.62
66.273.40.100	SDAT40 x PNER40 - 100	168.4	75.9					1.65
67.273.16.070	SDAT50 x PNER16 - 70	171.75	40.9	30	30	M10 x 1.5P	3.0 ~ 10	2.80
67.273.16.100	SDAT50 x PNER16 - 100	201.75	70.9					3.20
67.273.16.160	SDAT50 x PNER16 - 160	261.75	130.9	32	32	M10 x 1.5P	3.0 ~ 13	4.50
67.273.20.070	SDAT50 x PNER20 - 70	171.75	40.9					3.00
67.273.20.100	SDAT50 x PNER20 - 100	201.75	70.9	40	40	M16 x 2.0P	3.0 ~ 16	3.40
67.273.25.070	SDAT50 x PNER25 - 70	171.75	40.9					3.40
67.273.25.100	SDAT50 x PNER25 - 100	201.75	70.9	50	50	M16 x 2.0P	3.0 ~ 16	3.54
67.273.25.160	SDAT50 x PNER25 - 160	261.75	130.9					4.6
67.273.32.070	SDAT50 x PNER32 - 70	171.75	40.9	50	50	M16 x 2.0P	3.0 ~ 20	3.50
67.273.32.100	SDAT50 x PNER32 - 100	201.75	70.9					4.30
67.273.40.070	SDAT50 x PNER40 - 70	171.75	45.9	63	63	M20 x 2.0P	6.0 ~ 26	3.50
67.273.40.100	SDAT50 x PNER40 - 100	201.75	75.9					4.30



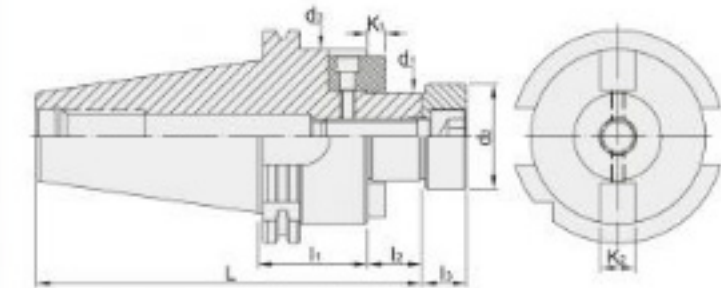


SDAT



- High accurate working process. Even though using prolonged drill, the concentricity is still within 0.015mm.

SDAT / FMB



- d1 tolerance : h6.
- Tolerance of 7/24 taper : AT3.
- The pre-balance can reach G6.3 3 ,000 rpm, without an inspection report.
- The balancing grade and revolution can be done according to customer's request but the additional charge is needed.

MODEL NO.	TYPE - l ₁	L	l ₂	l ₃	d ₁	d ₂	WEIGHT (KGS)
66.465.01.050	SDAT40 x MTA1 - 50	118.4	56	22	25	12.065	1.20
66.465.02.050	SDAT40 x MTA2 - 50		67	27	32	17.78	1.00
66.465.03.070	SDAT40 x MTA3 - 70	138.4	84	47	40	23.825	1.10
66.465.04.095	SDAT40 x MTA4 - 95	163.4	107	74	48	31.267	1.35
67.465.01.045	SDAT50 x MTA1 - 45	146.75	56	22	25	12.065	3.00
67.465.02.060	SDAT50 x MTA2 - 60	161.75	67	35	32	17.78	3.10
67.465.03.065	SDAT50 x MTA3 - 65	166.75	84	40	40	23.825	3.20
67.465.04.095	SDAT50 x MTA4 - 95	196.75	107	70	48	31.267	3.40
67.465.05.105	SDAT50 x MTA5 - 105	206.75	133	80	63	44.399	3.60

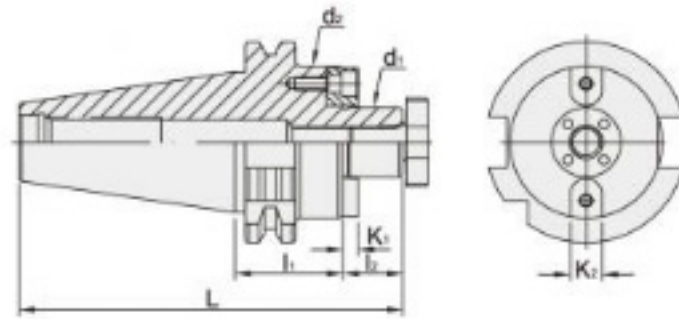
MODEL NO.	TYPE d ₁ - l ₁	L	l ₂	l ₃	d ₂	d ₃	K ₁	K ₂	WEIGHT (KGS)
66.153.22.035	SDAT40 x FMB22 - 35	122.4	19	14	26	48	4.8	10	1.20
66.153.27.060	SDAT40 x FMB27 - 60	148.4	20	16	31.5	58	5.8	12	1.80
66.153.32.060	SDAT40 x FMB32 - 60	150.4	22		41	66	6.8	14	2.30
66.153.40.060	SDAT40 x FMB40 - 60	153.4	25	20.5	48	80	8.3	16	2.80
67.153.22.035	SDAT50 x FMB22 - 35	155.75	19	14	26	48	4.8	10	3.40
67.153.27.035	SDAT50 x FMB27 - 35	156.75	20	16	31.5	58	5.8	12	3.50
67.153.32.035	SDAT50 x FMB32 - 35	158.75	22		41	66	6.8	14	3.70
67.153.40.050	SDAT50 x FMB40 - 50	176.75	25	20.5	48	80	8.3	16	4.70
67.153.50.060	SDAT50 x FMB50 - 60	191.75	30	25	68	95	9.7	19	5.80





ห้างหุ้นส่วนจำกัด เลิศไพบุณ สตีล Lert Piboon Steel Ltd., Part.

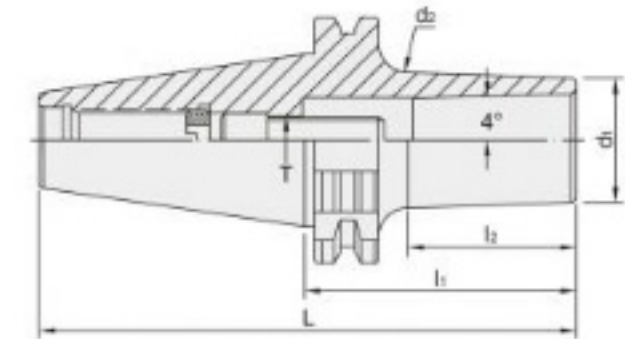
SDAT / FMC



- d1 tolerance: h6.
- Tolerance of 7/24 taper: within AT3.
- The pre-balance can reach G6.3 3,000 rpm, without an inspection report.
- The balancing grade and revolution can be done according to customer's request but the additional charge is needed.



SDAT / SBL



- Every tool holder reaches the revolution of G2.5 25,000 rpm, with an inspection report.
- The balancing grade and revolution can be done according to customer's request but the additional charge is needed.

T.W. PAT. NO. M274178

MODEL NO.	TYPE - l ₁	L	l ₂	d ₁	d ₂	SIZE RANGE	T	WEIGHT (KGS)
66.648.06.070	SDAT40 x SBL6 - 70	138.4	36	14	17	φ 3 ~ φ 6	M6 x 1.0P	1.00
66.648.06.100	SDAT40 x SBL6 - 100	168.4	58		20			1.10
66.648.12.070	SDAT40 x SBL12 - 70	138.4	41	26	29	φ 3 ~ φ 12	M10 x 1.5P	1.20
66.648.12.100	SDAT40 x SBL12 - 100	168.4	71		32			1.30
66.648.20.070	SDAT40 x SBL20 - 70	138.4	41	35	38	φ 3 ~ φ 20	M12 x 1.75P	1.30
66.648.20.100	SDAT40 x SBL20 - 100	168.4	78		41			1.40
66.648.25.080	SDAT40 x SBL25 - 80	148.4	58	40	45	φ 3 ~ φ 25	M16 x 2.0P	1.50
66.648.25.100	SDAT40 x SBL25 - 100	168.4	79		46			1.60
67.648.06.070	SDAT50 x SBL6 - 70	171.75	36	14	17	φ 3 ~ φ 6	M6 x 1.0P	2.80
67.648.06.100	SDAT50 x SBL6 - 100	201.75	66		20			2.90
67.648.12.070	SDAT50 x SBL12 - 70	171.75	41	26	29	φ 3 ~ φ 12	M10 x 1.5P	3.00
67.648.12.100	SDAT50 x SBL12 - 100	201.75	71		32			3.10
67.648.20.070	SDAT50 x SBL20 - 70	171.75	41	35	38	φ 3 ~ φ 20	M12 x 1.75P	3.20
67.648.20.100	SDAT50 x SBL20 - 100	201.75	71		41			3.30
67.648.25.080	SDAT50 x SBL25 - 80	171.75	39	40	43	φ 3 ~ φ 25	M16 x 2.0P	3.20
67.648.25.100	SDAT50 x SBL25 - 100	201.75	71		46			3.40

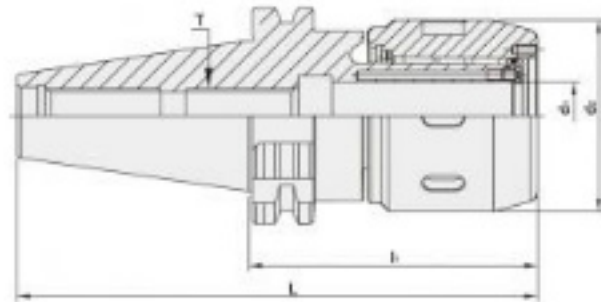
MODEL NO.	TYPE	L	l ₁	l ₂	D	d ₁	d ₂	K ₁	K ₂
66.157.16.050	SDAT40 x FMC16 - 50	135.4	50	17	40	16	20	5	8
66.157.22.050	SDAT40 x FMC22 - 50	137.5		19	50	22	28	4.8	10
66.157.27.060	SDAT40 x FMC27 - 60	149.4	60	21	60	27	35	5.8	12
66.157.32.060	SDAT40 x FMC32 - 60	152.4		24	78	32	42	6.8	14
67.157.16.050	SDAT50 x FMC16 - 50	168.75	50	17	40	16	20	5	8
67.157.22.050	SDAT50 x FMC22 - 50	170.75		19	50	22	28	4.8	10
67.157.27.050	SDAT50 x FMC27 - 50	172.75	60	21	60	27	35	5.8	12
67.157.32.060	SDAT50 x FMC32 - 60	185.75		24	78	23	42	6.8	14
67.157.40.070	SDAT50 x FMC40 - 70	198.75	70	27	89	40	52	8.3	16





ห้างหุ้นส่วนจำกัด เลิศไพบุณย์ สตีล Lert Piboon Steel Ltd., Part.

SDAT / MLD



T W PAT NO. M447277
T W PAT NO. M430337

- There is a special design for the slots of internal hole. It prevents the cutting tools from slipping and increases the clamping power.
- The body of the tool holder is thick, so it has good clamping power. It adopts the needle bearing design to prevent the slipping. The operation is convenient and easy.
- After locking the cutting tool (The tolerance of the cutting tool must be less than h6), it is more contacted with the flange while locking the clamping nut and tool holder. It can prevent the bearing cage from deformation easily. Also, rigidity and dust-proof function is improved.

- High stability of the precision and easy for combination. There won't be a situation of vibration during the high speed processing or big cutting depth.
- Good clamping power. The clamping power of MLD32 type is around 1000 N-m.
- Run-out: Within 0.001-0.005mm.
- Concentricity: 0.02mm.
- The pre-balance can reach G6.3 8,000RPM, with an inspection report. The balancing grade and revolution can be done according to customer's request but the additional charge is needed.

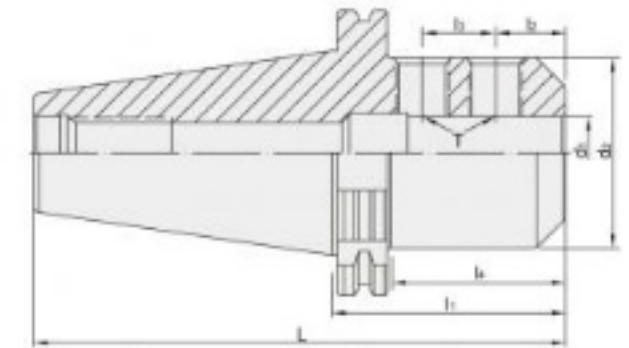


- When using MLD sealed cap, the coolant fluid discharges from the cutting tool. It's good for heat dissipation and metal chips removal.



- The design of coolant grooves improves the cooling and metal chips removal capability.

SDAT / SLN



- Internal hole tolerance : H5(DIN-1835-B standard).
- The tolerance of tool shank diameter is within h6 with the request of revolution.
- The pre-balance can reach G6.3 8,000 rpm, without an inspection report.
- The balancing grade and revolution can be done according to customer's request but the additional charge is needed.

MODEL NO.	TYPE - (d ₁ - l ₁)	L	l ₂	l ₃	l ₄	d ₂	T	WEIGHT (KGS)
66.653.06.050	SDAT40 x SLN6 - 50	118.4	18	-	27	25	M6 x 1.0P	0.85
66.653.08.050	SDAT40 x SLN8 - 50					28	M8 x 1.25P	1.00
66.653.10.050	SDAT40 x SLN10 - 50					35	M10 x 1.5P	1.10
66.653.12.050	SDAT40 x SLN12 - 50					42	M12 x 1.75P	1.15
66.653.16.063	SDAT40 x SLN16 - 63	131.4	24	-	43	45	M14 x 2.0P	1.40
66.653.20.063	SDAT40 x SLN20 - 63					52	M16 x 2.0P	1.30
66.653.25.100	SDAT40 x SLN25 - 100	168.4	24	25	80	65	M18 x 2.0P	2.40
66.653.32.100	SDAT40 x SLN32 - 100					72	M20 x 2.0P	2.70
67.653.06.063	SDAT50 x SLN6 - 63	164.75	18.0	-	33	25	M6 x 1.0P	3.10
67.653.08.063	SDAT50 x SLN8 - 63					28	M8 x 1.25P	3.10
67.653.10.063	SDAT50 x SLN10 - 63					35	M10 x 1.5P	3.30
67.653.12.063	SDAT50 x SLN12 - 63					42	M12 x 1.75P	3.50
67.653.16.063	SDAT50 x SLN16 - 63					48	M14 x 2.0P	3.45
67.653.20.063	SDAT50 x SLN20 - 63					52	M16 x 2.0P	3.50
67.653.25.080	SDAT50 x SLN25 - 80	181.75	24	25	59	65	M18 x 2.0P	4.20
67.653.32.100	SDAT50 x SLN32 - 100					78	72	5.00
67.653.40.100	SDAT50 x SLN40 - 100	201.75	30	32	80	90	M20 x 2.0P	5.60
67.653.42.100	SDAT50 x SLN42 - 100					90	90	5.70
67.653.50.125	SDAT50 x SLN50 - 125	226.75	35	35	105	100	M24 x 2.0P	5.90
67.653.63.150	SDAT50 x SLN63 - 150	250.75	40	40	130	125	M20 x 2.0P	6.20

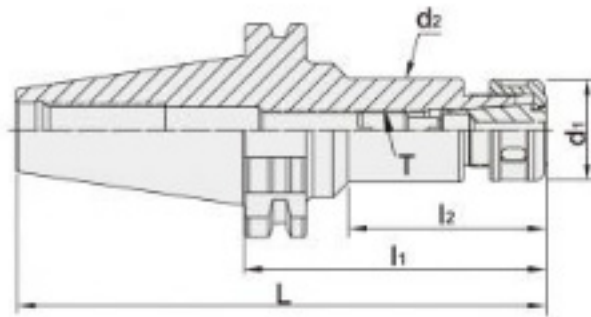
MODEL NO.	TYPE	L	l ₁	d ₁	d ₂	T	WEIGHT (KGS)
66.463G.12.075	SDAT40 x MLD12 - 75	143.4	75	12	42	M12 x 1.75P	2.1
66.463G.16.080	SDAT40 x MLD16 - 80	148.4	80	16	48		2.2
66.463G.20.085	SDAT40 x MLD20 - 85	153.4	85	20	56.5		2.4
66.463G.20.135	SDAT40 x MLD20 - 135	203.4	135			2.5	
66.463G.25.095	SDAT40 x MLD25 - 95	163.4	95	25	60	M16 x 2.0P	2.0
66.463G.32.105	SDAT40 x MLD32 - 105	173.4	105	32	71		2.7
66.463G.32.135	SDAT40 x MLD32 - 135	203.4	135				3.0
67.463G.12.075	SDAT50 x MLD12 - 75	176.75	75	12	42	M12 x 1.75P	3.2
67.463G.16.075	SDAT50 x MLD16 - 75			16	48		
67.463G.20.105	SDAT50 x MLD20 - 105	206.75	105	20	56.5	M24 x 3.0P	4.5
67.463G.20.150	SDAT50 x MLD20 - 150	251.75	150			M16 x 2.0P	4.9
67.463G.25.105	SDAT50 x MLD25 - 105	206.75	105	25	60	M16 x 2.0P	4.1
67.463G.32.105	SDAT50 x MLD32 - 105	206.75	105	32	71	M24 x 3.0P	5.1
67.463G.32.135	SDAT50 x MLD32 - 135	236.75	135			M16 x 2.0P	5.9
67.463G.42.115	SDAT50 x MLD42 - 115	216.75	115	42	90	M24 x 3.0P	5.0





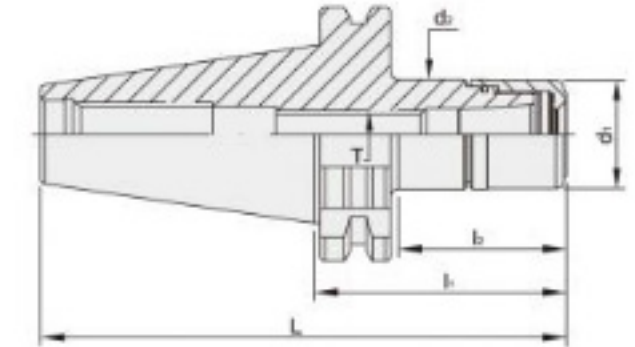
ห้างหุ้นส่วนจำกัด เลิศไพบุณ สตีล Lert Piboon Steel Ltd., Part.

SDAT / SKS



- Runout is within 5 μ (4D length).
- SKS Collet taper : 4°, increasing holding power, concentricity and rigidity.
- Every tool holder reaches revolution of G2.5 25,000 rpm, with an inspection report.
- The balancing grade and revolution can be done according to customer's request but the additional charge is needed.

SDAT / SK3



- The length of SK3 clamping nut is longer and the front thread of SK3 collet chuck is designed with an O-ring, which prevents coolant fluid and metal chips from getting into the tool holder.
- Applicable collet: SYIC-18302~SYIC-18310 SKS collet.
- SK3 is exchangeable with other brands of SKS collets on the market.
- Standard revolution: G2.5 25,000rpm, with an inspection report.

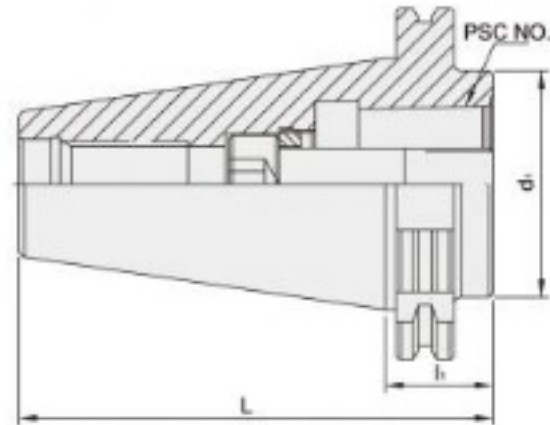
MODEL NO.	TYPE - l ₁	L	l ₂	d ₁	d ₂	T	SIZE RANGE	WEIGHT (KGS)
66.658.06.090	SDAT40 x SKS6 - 90	158.4	51	18	18	M8 x 1.25P	φ3 ~ φ6	0.6
66.658.06.120	SDAT40 x SKS6 - 120	188.4	81					0.7
66.658.10.090	SDAT40 x SKS10 - 90	158.4	52	30	27.6	M12 x 1.75P	φ3 ~ φ10	1.2
66.658.10.120	SDAT40 x SKS10 - 120	188.4	82					1.4
66.658.13.090	SDAT40 x SKS13 - 90	158.4	67	35	33	M12 x 1.75P	φ3 ~ φ13	1.4
66.658.13.120	SDAT40 x SKS13 - 120	188.4	97					1.6
66.658.16.090	SDAT40 x SKS16 - 90	158.4	65	40	40	M18 x 1.5P	φ3 ~ φ16	1.3
66.658.16.120	SDAT40 x SKS16 - 120	188.4	95					1.5
66.658.20.090	SDAT40 x SKS20 - 90	158.4	70	48.5	48.5	M22 x 1.5P	φ3 ~ φ20	1.6
66.658.20.120	SDAT40 x SKS20 - 120	188.4	100					2.0
66.658.25.090	SDAT40 x SKS25 - 90	158.4	70	55.1	49.85	M28 x 2.0P	φ3 ~ φ25.4	1.3
66.658.25.120	SDAT40 x SKS25 - 120	188.4	100					1.5
67.658.06.105	SDAT50 x SKS6 - 105	206.75	64	18	18	M8 x 1.25P	φ3 ~ φ6	4.2
67.658.06.165	SDAT50 x SKS6 - 165	266.75	124					4.6
67.658.10.105	SDAT50 x SKS10 - 105	206.75	70	30	30	M12 x 1.75P	φ3 ~ φ10	4.2
67.658.10.165	SDAT50 x SKS10 - 165	266.75	130					4.6
67.658.13.105	SDAT50 x SKS13 - 105	206.75	80	35	33	M12 x 1.75P	φ3 ~ φ13	4.2
67.658.13.165	SDAT50 x SKS13 - 165	266.75	140					4.6
67.658.16.105	SDAT50 x SKS16 - 105	206.75	75	40	40	M18 x 1.5P	φ3 ~ φ16	4.3
67.658.16.165	SDAT50 x SKS16 - 165	266.75	127					4.7
67.658.20.105	SDAT50 x SKS20 - 105	206.75	80	48.5	48.5	M22 x 1.5P	φ3 ~ φ20	4.3
67.658.20.165	SDAT50 x SKS20 - 165	266.75	140					4.7
67.658.25.105	SDAT50 x SKS25 - 105	206.75	80	55.1	55	M28 x 2.0P	φ3 ~ φ25.4	5.0
67.658.25.165	SDAT50 x SKS25 - 165	266.75	140					5.3

MODEL NO.	TYPE - l ₁	L	l ₁	l ₂	d ₁	d ₂	T	SIZE RANGE	WEIGHT (KGS)
66.763.306.080	SDAT40 x SK306 - 80	148.4	80	42.75	18	32	M8 x 1.25P	φ3 ~ φ6	1.1
66.763.306.100	SDAT40 x SK306 - 100	168.4	100	62.75					1.3
66.763.306.120	SDAT40 x SK306 - 120	188.4	120	82.75					1.4
66.763.310.080	SDAT40 x SK310 - 80	148.4	80	50.9	27	27.5	M12 x 1.75P	φ3 ~ φ10	1.1
66.763.310.100	SDAT40 x SK310 - 100	168.4	100	70.9					1.3
66.763.310.120	SDAT40 x SK310 - 120	188.4	120	90.9					1.4
66.763.313.080	SDAT40 x SK313 - 80	148.4	80	55.9	34	34.4	M12 x 1.75P	φ3 ~ φ13	1.1
66.763.313.100	SDAT40 x SK313 - 100	168.4	100	75.9					1.3
66.763.313.120	SDAT40 x SK313 - 120	188.4	120	95.9					1.4
66.763.316.080	SDAT40 x SK316 - 80	148.4	80	55.9	40	40.5	M18 x 1.5P	φ3 ~ φ16	1.2
66.763.316.100	SDAT40 x SK316 - 100	168.4	100	75.9					1.4
66.763.316.120	SDAT40 x SK316 - 120	188.4	120	95.9					1.5
67.763.306.080	SDAT50 x SK306 - 80	181.75	80	40.75	18	32	M8 x 1.25P	φ3 ~ φ6	4.0
67.763.306.100	SDAT50 x SK306 - 100	201.75	100	60.75					4.1
67.763.306.120	SDAT50 x SK306 - 120	221.75	120	80.75					4.2
67.763.310.080	SDAT50 x SK310 - 80	181.75	80	50.9	27	27.5	M12 x 1.75P	φ3 ~ φ10	4.1
67.763.310.100	SDAT50 x SK310 - 100	201.75	100	70.9					4.2
67.763.310.120	SDAT50 x SK310 - 120	221.75	120	90.9					4.3
67.763.313.080	SDAT50 x SK313 - 80	181.75	80	50.9	34	34.4	M12 x 1.75P	φ3 ~ φ13	4.2
67.763.313.100	SDAT50 x SK313 - 100	201.75	100	70.9					4.3
67.763.313.120	SDAT50 x SK313 - 120	221.75	120	90.9					4.4
67.763.316.080	SDAT50 x SK316 - 80	181.75	80	50.9	40	40.5	M18 x 1.5P	φ3 ~ φ16	4.3
67.763.316.100	SDAT50 x SK316 - 100	201.75	100	70.9					4.4
67.763.316.120	SDAT50 x SK316 - 120	221.75	120	90.9					4.5





SDAT



MODEL NO.	TYPE	PSC NO.	L	h	d ₁
66.501.32.030	SDAT40 x PSC32 - 30	PSC 32	98.4	30	32
66.501.40.040	SDAT40 x PSC40 - 40	PSC 40	108.4	40	40
66.501.50.050	SDAT40 x PSC50 - 50	PSC 50	118.4	50	50
66.501.63.090	SDAT40 x PSC63 - 90	PSC 63	158.4	90	63
67.501.32.030	SDAT50 x PSC32 - 30	PCS 32	131.75	30	32
67.501.40.030	SDAT50 x PSC40 - 30	PCS 40			40
67.501.50.030	SDAT50 x PSC50 - 30	PCS 50			50
67.501.63.030	SDAT50 x PSC63 - 30	PCS 63	201.75	100	63
67.501.63.100	SDAT50 x PSC63 - 100				
67.501.63.150	SDAT50 x PSC63 - 150				
67.501.63.200	SDAT50 x PSC63 - 200				
67.501.63.250	SDAT50 x PSC63 - 250				
67.501.63.300	SDAT50 x PSC63 - 300	401.75	300		

