

TOOL HOLDER SYSTEM

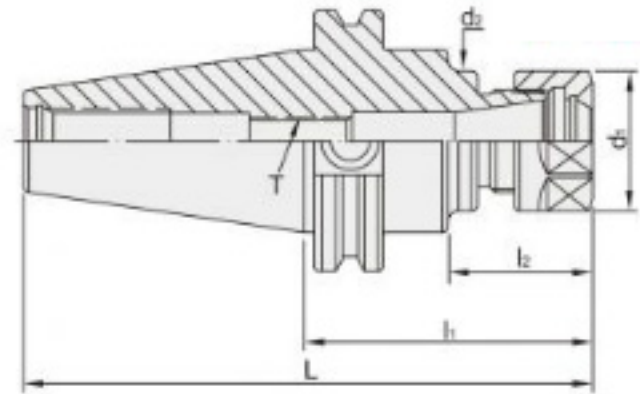
SCAT ANSI B5.50
series





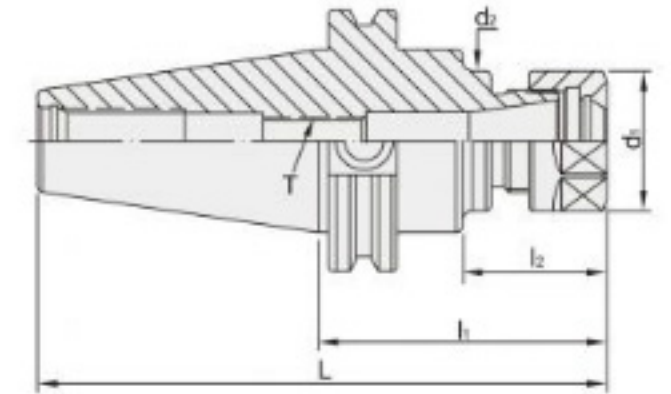
ห้างหุ้นส่วนจำกัด เลิศไพบุณ สตีล Lert Piboon Steel Ltd., Part.

SCAT / ER



- Can clamp straight cutters and tools.
- The pre-balance can reach G6.3 10,000 rpm, without an inspection report.
- The balancing grade and revolution can be done according to customer's request but the additional charge is needed.

SCAT / ER



- Can clamp straight cutters and tools.
- The pre-balance can reach G6.3 10,000 rpm, without an inspection report.
- The balancing grade and revolution can be done according to customer's request but the additional charge is needed.

INCHES

MODEL NO.	TYPE - l ₁	L	l ₂	d ₁	d ₂	T	SIZE RANGE	WEIGHT (KGS)
43.122.16.276	SCAT40 x ER16A - 2.76"	5.447	1.28	1.102	1.1	M10 x 1.5P	0.0156 ~ 0.375	1.50
43.122.16.400	SCAT40 x ER16A - 4"	6.687	2.14					1.10
43.122.16.600	SCAT40 x ER16A - 6"	8.687	4.14					1.55
43.122.16.800	SCAT40 x ER16A - 8"	10.687	6.29					1.85
43.122.20.276	SCAT40 x ER20A - 2.76"	5.447	1.28	1.339	1.3	M12 x 1.75P	0.0625 ~ 0.500	1.25
43.122.20.400	SCAT40 x ER20A - 4"	6.687	2.37					1.65
43.122.20.600	SCAT40 x ER20A - 6"	8.687	4.33					1.85
43.122.25.276	SCAT40 x ER25 - 2.76"	5.447	1.38					1.654
43.122.25.400	SCAT40 x ER25 - 4"	6.687	2.57	1.70				
43.122.25.600	SCAT40 x ER25 - 6"	8.687	4.62	2.25				
43.122.25.800	SCAT40 x ER25 - 8"	10.687	6.62	2.55				
43.122.32.276	SCAT40 x ER32 - 2.76"	5.447	1.38	1.969	1.75	M16 x 2.0P	0.1250 ~ 0.750	1.16
43.122.32.300	SCAT40 x ER32 - 3"	5.687	1.62					1.50
43.122.32.400	SCAT40 x ER32 - 4"	6.687	2.62					1.75
43.122.32.600	SCAT40 x ER32 - 6"	8.687	5.21					2.15
43.122.32.800	SCAT40 x ER32 - 8"	10.687	6.62	2.48	2.36	M20 x 2.0P	0.1250 ~ 1.000	2.70
43.122.40.315	SCAT40 x ER40 - 3.15"	5.837	1.72					1.25
43.122.40.400	SCAT40 x ER40 - 4"	6.687	2.48					1.80
43.122.40.600	SCAT40 x ER40 - 6"	8.687	4.48					3.00
43.122.50.400	SCAT40 x ER50 - 4"	5.837	2.48	3.07	2.52	M24 x 2.0P	0.2500 ~ 1.250	2.65

INCHES

MODEL NO.	TYPE - l ₁	L	l ₂	d ₁	d ₂	T	SIZE RANGE	WEIGHT (KGS)
44.122.16.300	SCAT50 x ER16A - 3"	7	1.43	1.102	1.1	M10 x 1.5P	0.0156 ~ 0.375	4.05
44.122.16.400	SCAT50 x ER16A - 4"	8	2.07					4.20
44.122.16.500	SCAT50 x ER16A - 5"	9	3.07					4.30
44.122.16.600	SCAT50 x ER16A - 6"	10	4.29					4.40
44.122.16.800	SCAT50 x ER16A - 8"	12	6.15	1.339	1.34	M12 x 1.75P	0.0625 ~ 0.500	4.50
44.122.20.400	SCAT50 x ER20A - 4"	8	2.07					4.20
44.122.20.600	SCAT50 x ER20A - 6"	10	4.15					4.45
44.122.20.800	SCAT50 x ER20A - 8"	12	6.07					4.60
44.122.25.400	SCAT50 x ER25 - 4"	8	2.45	1.654	1.65	M16 x 2.0P	0.0625 ~ 0.625	4.15
44.122.25.600	SCAT50 x ER25 - 6"	10	3.92					4.50
44.122.25.800	SCAT50 x ER25 - 8"	12	5.91					4.70
44.122.32.400	SCAT50 x ER32 - 4"	8	2.15					1.969
44.122.32.600	SCAT50 x ER32 - 6"	10	4.15	4.60				
44.122.32.800	SCAT50 x ER32 - 8"	12	6.07	4.90				
44.122.40.400	SCAT50 x ER40 - 4"	8	2.35	2.48	2.36	M20 x 2.0P	0.1250 ~ 1.000	
44.122.40.600	SCAT50 x ER40 - 6"	10	4.43					4.80
44.122.40.800	SCAT50 x ER40 - 8"	12	6.43					5.10
44.122.50.400	SCAT50 x ER50 - 4"	8	2.62					3.07
44.122.50.600	SCAT50 x ER50 - 6"	10	4.62	5.55				



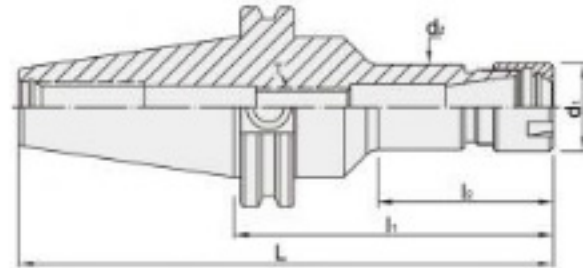


ห้างหุ้นส่วนจำกัด เลิศไพบุณย์ สตีล Lert Piboon Steel Ltd., Part.

SCAT / ER

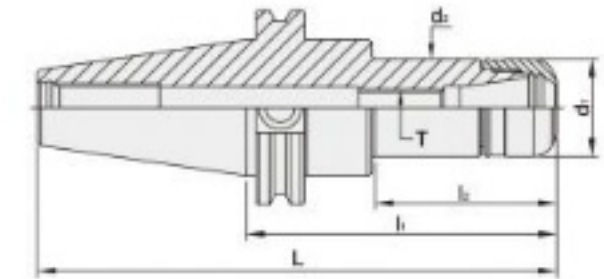


T W PAT NO. M298033
 T W PAT NO. M311791
 J P PAT NO. 3128766
 K R PAT NO. 20-0439003
 C N PAT NO. ZL200620132861.0
 C N PAT NO. ZL200620103196.7
 C H PAT NO. 690650
 T R PAT NO. TR 2007 02942 Y
 I T PAT NO. N0000266731



- The pre-balance can reach G6.3 10,000 rpm, without an inspection report.
- The balancing grade and revolution can be done according to customer's request but the additional charge is needed.

SCAT / PNER



- Runout accuracy: within 3µm.
- The gauge line of PNER collet is shorter, so PNER collet sits well in the PNER holder better than conventional ER collet chucks, which improves the overall runout accuracy of PNER collet chuck and stability of machining.
- Standard revolution: G2.5 25,000rpm, with an inspection report.

INCHES

MODEL NO.	TYPE - l ₁	L	l ₂	d ₁	d ₂	T	SIZE RANGE	WEIGHT (KGS)
43.273.16.250	SCAT40 x PNER16 - 2.5"	5.187	1.06	1.18	1.18	M10 x 1.5P	0.125 ~ 0.375	1.05
43.273.16.400	SCAT40 x PNER16 - 4"	6.687	2.43					1.35
43.273.16.500	SCAT40 x PNER16 - 5"	7.687	3.43					1.65
43.273.20.300	SCAT40 x PNER20 - 3"	5.684	1.5	1.25	1.25	M12 x 1.75P	0.125 ~ 0.500	1.25
43.273.20.400	SCAT40 x PNER20 - 4"	6.687	2.5					1.65
43.273.25.400	SCAT40 x PNER25 - 4"	6.687	2.54	1.96	1.96	M16 x 2.0P	0.125 ~ 0.625	1.85
43.273.32.300	SCAT40 x PNER32 - 3"	5.684	1.51					1.16
43.273.32.400	SCAT40 x PNER32 - 4"	6.687	2.52					1.50
43.273.32.500	SCAT40 x PNER32 - 5"	7.687	3.51	1.96	1.96	M16 x 2.0P	0.125 ~ 0.750	1.75
43.273.32.600	SCAT40 x PNER32 - 6"	8.687	4.51					2.15
43.273.40.400	SCAT40 x PNER40 - 4"	6.687	2.62					2.48
44.273.16.400	SCAT50 x PNER16 - 4"	8	2.03	1.18	1.18	M10 x 1.5P	0.125 ~ 0.375	4.05
44.273.16.600	SCAT50 x PNER16 - 6"	10	4.03					4.40
44.273.20.400	SCAT50 x PNER20 - 4"	8	2.14	1.25	1.25	M12 x 1.75P	0.125 ~ 0.500	4.20
44.273.20.600	SCAT50 x PNER20 - 6"	10	4.14					4.45
44.273.25.400	SCAT50 x PNER25 - 4"	8	2.38	1.57	1.57	M16 x 2.0P	0.125 ~ 0.625	4.15
44.273.25.600	SCAT50 x PNER25 - 6"	10	4.38					4.50
44.273.32.400	SCAT50 x PNER32 - 4"	8	2.42					1.96
44.273.32.600	SCAT50 x PNER32 - 6"	10	4.42	4.60				
44.273.40.400	SCAT50 x PNER40 - 4"	8	2.48	2.48	2.48	M20 x 2.0P	0.250 ~ 1.000	5.26
44.273.40.600	SCAT50 x PNER40 - 6"	10	4.65					6.36

INCHES

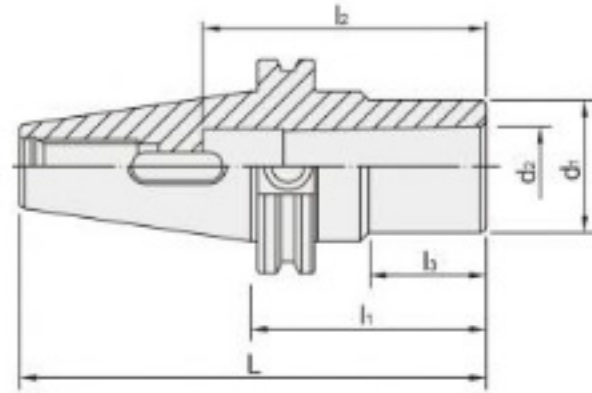
MODEL NO.	TYPE - l ₁	L	l ₂	d ₁	d ₂	T	SIZE RANGE	WEIGHT (KGS)
43.123.11.275	SCAT40 x ER11M - 2.75"	5.447	1.175	0.63	0.59	M6 x 1.0P	0.0625 ~ 0.250	1.1
43.123.11.400	SCAT40 x ER11M - 4"	6.687	2.228					1.2
43.123.16.276	SCAT40 x ER16M - 2.76"	5.447	1.322	0.87	0.83	M10 x 1.5P	0.0625 ~ 0.375	1.2
43.123.16.400	SCAT40 x ER16M - 4"	6.687	2.425					1.3
43.123.20.276	SCAT40 x ER20M - 2.76"	5.447	1.323	1.102	1.06	M12 x 1.75P	0.0625 ~ 0.500	1.2
43.123.20.400	SCAT40 x ER20M - 4"	6.687	2.197					1.5
44.123.16.400	SCAT50 x ER16M - 4"	8	1.927	0.87	0.83	M10 x 1.5P	0.0625 ~ 0.375	3.9
44.123.16.600	SCAT50 x ER16M - 6"	10	4.009					4.0
44.123.20.400	SCAT50 x ER20M - 4"	8	2.127	1.102	1.06	M12 x 1.75P	0.0625 ~ 0.500	4.2
44.123.20.600	SCAT50 x ER20M - 6"	10	4.127					5.2





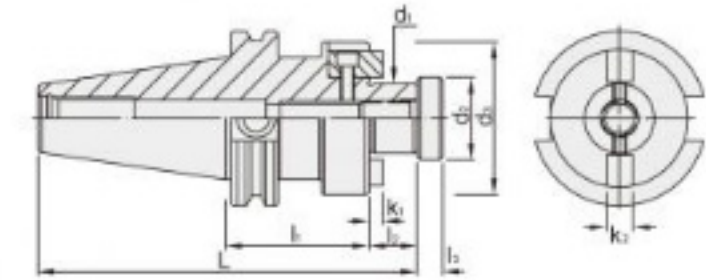
ทางท่อนส่วนจำกัด เลิศไพบุณย์ สตีล Lert Piboon Steel Ltd., Part.

SCAT



- High accurate working process. Even though using prolonged drill, the concentricity is still within 0.015mm.

SCAT / FMA



- d1 tolerance : h6.
- Tolerance of 7/24 taper : AT3.
- The pre-balance can reach G6.3 3,000 rpm, without an inspection report.
- The balancing grade and revolution can be done according to customer's request but the additional charge is needed.

INCHES

MODEL NO.	TYPE d ₁ - l ₁	L	l ₂	l ₃	d ₂	d ₃	K ₁	K ₂	WEIGHT (KGS)
43.151.64.137	SCAT40 x FMA3/4" - 1.37"	4.744	0.687	0.512	0.925	1.69	0.188	0.3125	1.50
43.151.64.400	SCAT40 x FMA3/4" - 4"	7.374							1.70
43.151.64.600	SCAT40 x FMA3/4" - 6"	9.374							1.90
43.151.68.206	SCAT40 x FMA1" - 2.06"	5.434							1.50
43.151.68.400	SCAT40 x FMA1" - 4"	7.374		0.63	1.24	2.19	0.375	2.55	
43.151.68.600	SCAT40 x FMA1" - 6"	9.374						2.75	
43.151.72.221	SCAT40 x FMA1-1/4" - 2.21"	5.584						2.60	
43.151.72.400	SCAT40 x FMA1-1/4" - 4"	7.374						2.75	
43.151.72.600	SCAT40 x FMA1-1/4" - 6"	9.374						2.95	
43.151.77.221	SCAT40 x FMA1-1/2" - 2.21"	5.584						0.938	0.807
43.151.77.400	SCAT40 x FMA1-1/2" - 4"	7.627	2.95						
44.151.64.150	SCAT50 x FMA3/4" - 1.5"	6.187	0.687	0.512	0.925	1.69	0.188	0.3125	4.20
44.151.64.350	SCAT50 x FMA3/4" - 3.5"	8.187							4.40
44.151.64.550	SCAT50 x FMA3/4" - 5.5"	10.187							4.60
44.151.68.200	SCAT50 x FMA1" - 2"	6.687							4.50
44.151.68.400	SCAT50 x FMA1" - 4"	8.687		0.63	1.24	2.19	0.375	4.70	
44.151.68.600	SCAT50 x FMA1" - 6"	10.687						4.90	
44.151.72.150	SCAT50 x FMA1-1/4" - 1.5"	6.187						4.70	
44.151.72.350	SCAT50 x FMA1-1/4" - 3.5"	8.187						4.80	
44.151.72.500	SCAT50 x FMA1-1/4" - 5"	9.687						5.00	
44.151.72.600	SCAT50 x FMA1-1/4" - 6"	10.687						5.10	
44.151.77.240	SCAT50 x FMA1-1/2" - 2.4"	7.388	0.938	0.807	1.752	3.81	0.349	0.625	5.00
44.151.77.400	SCAT50 x FMA1-1/2" - 4"	8.988							5.20
44.151.77.600	SCAT50 x FMA1-1/2" - 6"	10.988	0.938	0.807	1.752	3.81	0.349	0.625	5.40
44.151.86.240	SCAT50 x FMA2" - 2.4"	7.388							5.40
44.151.86.400	SCAT50 x FMA2" - 4"	8.988	2.5	4.88	0.384	0.75	5.60		

INCHES

MODEL NO.	TYPE - l ₁	L	l ₂	l ₃	d ₁	d ₂	WEIGHT (KGS)
43.465.01.160	SCAT40 x MTA1 - 1.6"	4.287	2.205	0.12	1	0.475	1.30
43.465.02.200	SCAT40 x MTA2 - 2"	4.687	2.638	0.32	1.25	0.7	1.50
43.465.03.275	SCAT40 x MTA3 - 2.75"	5.437	3.307	1.29	1.55	0.938	1.14
43.465.04.375	SCAT40 x MTA4 - 3.75"	6.437	4.213	2.37	1.75	1.23	1.20
44.465.01.200	SCAT50 x MTA1 - 2"	6	2.205	0.13	1	0.475	4.05
44.465.02.200	SCAT50 x MTA2 - 2"		2.638	0.5	1.25	0.7	4.40
44.465.03.250	SCAT50 x MTA3 - 2.5"		3.307	1	1.55	0.938	4.50
44.465.04.330	SCAT50 x MTA4 - 3.3"	7.3	4.213	1.8	1.75	1.23	4.90
44.465.05.410	SCAT50 x MTA5 - 4.1"	8.1	5.236	2.59	2.48	1.748	5.15

PULL STUD



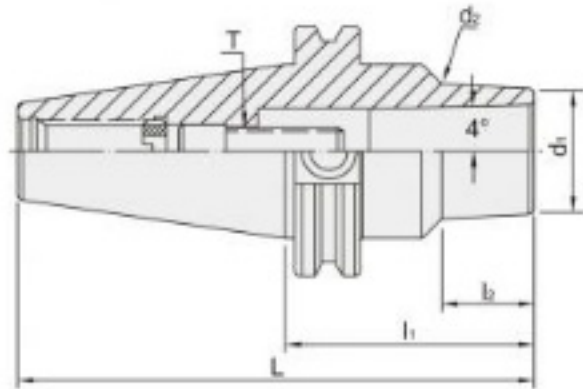
PULL STUD





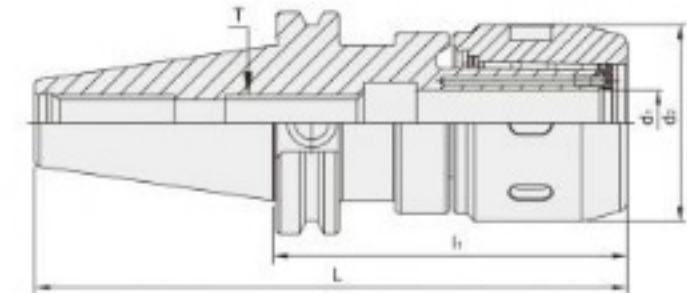
ห้างหุ้นส่วนจำกัด เลิศไพบุณ สตีล Lert Piboon Steel Ltd., Part.

SCAT / SBL



- Every tool holder reaches the revolution of G2.5 25,000 rpm, with an inspection report.
- The balancing grade and revolution can be done according to customer's request but the additional charge is needed.

SCAT / MLD



- There is a special design for the slots of internal hole. It prevents the cutting tools from slipping and increases the clamping power.
- The body of the tool holder is thick, so it has good clamping power. It adopts the needle bearing design to prevent the slipping. The operation is convenient and easy.
- After locking the cutting tool (The tolerance of the cutting tool must be less than h6), it is more contacted with the flange while locking the clamping nut and tool holder. It can prevent the bearing cage from deformation easily. Also, rigidity and dust-proof function is improved.

- High stability of the precision and easy for combination. There won't be a situation of vibration during the high speed processing or big cutting depth.
- Good clamping power. The clamping power of MLD32 type is around 1000 N-m.
- Run-out: Within 0.001~0.005mm.
- Concentricity: 0.02mm.
- The pre-balance can reach G6.3 8,000RPM, with an inspection report. The balancing grade and revolution can be done according to customer's request but the additional charge is needed.



- When using MLD sealed cap, the coolant fluid discharges from the cutting tool. It's good for heat dissipation and metal chips removal.



- The design of coolant grooves improves the cooling and metal chips removal capability.

INCHES

MODEL NO.	TYPE - l1	L	l2	d1	d2	T	SIZE RANGE	WEIGHT (KGS)
43.648.06.300	SCAT40 x SBL6 - 3"	5.687	1.09	0.551	0.65	M6 x 1.0P	0.125 ~ 0.25	1.00
43.648.06.400	SCAT40 x SBL6 - 4"	6.687	2.12		0.74			1.25
43.648.06.600	SCAT40 x SBL6 - 6"	8.687	4.17		0.92			1.20
43.648.12.250	SCAT40 x SBL12 - 2.5"	5.187	0.82	1.024	1.15	M10 x 1.5P	0.125 ~ 0.50	1.45
43.648.12.400	SCAT40 x SBL12 - 4"	6.687	2.23		1.26			1.20
43.648.12.600	SCAT40 x SBL12 - 6"	8.687	4.49		1.49			1.45
43.648.20.250	SCAT40 x SBL20 - 2.5"	5.187	0.98	1.378	1.46	M12 x 1.75P	0.125 ~ 0.75	1.20
43.648.20.400	SCAT40 x SBL20 - 4"	6.687	2.55		1.6			1.60
43.648.20.600	SCAT40 x SBL20 - 6"	8.687	4.62		-			1.50
43.648.25.325	SCAT40 x SBL25 - 3.25"	5.937	1.86	1.73	1.575	M16 x 2.0P	0.125 ~ 1.00	1.40
43.648.25.400	SCAT40 x SBL25 - 4"	6.687	2.598	1.75				1.60
44.648.06.350	SCAT50 x SBL6 - 3.5"	7.5	1.56	0.551	0.71	M6 x 1.0P	0.125 ~ 0.25	1.70
44.648.06.450	SCAT50 x SBL6 - 4.5"	8.5	2.38		0.8			1.50
44.648.06.600	SCAT50 x SBL6 - 6"	10	3.96		0.97			1.70
44.648.12.250	SCAT50 x SBL12 - 2.5"	6.5	0.93	1.024	1.11	M10 x 1.5P	0.125 ~ 0.50	4.00
44.648.12.450	SCAT50 x SBL12 - 4.5"	8.5	2.75		1.27			4.10
44.648.12.600	SCAT50 x SBL12 - 6"	10	4.25		1.4			4.20
44.648.20.250	SCAT50 x SBL20 - 2.5"	6.5	0.75	1.378	1.44	M12 x 1.75P	0.125 ~ 0.75	4.30
44.648.20.450	SCAT50 x SBL20 - 4.5"	8.5	2.75		1.62			4.60
44.648.20.600	SCAT50 x SBL20 - 6"	10	4.12		1.74			4.70
44.648.25.275	SCAT50 x SBL25 - 2.75"	6.75	1.33	1.69	1.575	M16 x 2.0P	0.125 ~ 1.00	4.40
44.648.25.450	SCAT50 x SBL25 - 4.5"	8.5	3.06	1.84				4.60

INCHES

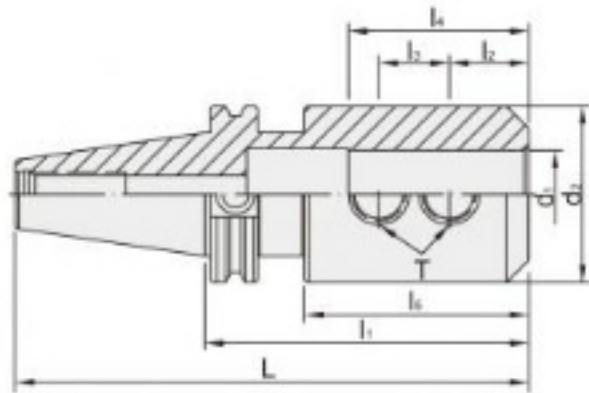
MODEL NO.	TYPE	L	l1	l2	T	d1	d2	WEIGHT (KGS)
43.463G.58.315	SCAT40 x MLD1/2" - 3.15"	5.837	3.15	1.575	M12 x 1.75P	0.5	1.654	1.8
43.463G.61.350	SCAT40 x MLD5/8" - 3.5"	6.187	3.5	1.969		0.625	1.889	1.9
43.463G.64.400	SCAT40 x MLD3/4" - 4"	6.687	4	2.38	5/8" - 11	0.75	2.224	1.9
43.463G.64.600	SCAT40 x MLD3/4" - 6"	8.687	6					2.1
43.463G.68.400	SCAT40 x MLD1" - 4"	6.687	4	2.165	5/8" - 11	1	2.362	2.0
43.463G.72.420	SCAT40 x MLD1-1/4" - 4.2"	6.887	4.2	2.799				2.5
43.463G.72.600	SCAT40 x MLD1-1/4" - 6"	8.687	6	2.799	M12 x 1.75P	1.25	2.795	2.7
44.463G.58.350	SCAT50 x MLD1/2" - 3.5"	7.5	3.5					1.575
44.463G.61.350	SCAT50 x MLD5/8" - 3.5"	8	3.5	1.969	0.625	1.889	2.7	
44.463G.64.400	SCAT50 x MLD3/4" - 4"	8	4	2.38	5/8" - 11	0.75	2.224	2.5
44.463G.64.600	SCAT50 x MLD3/4" - 6"	10	6	2.44				2.8
44.463G.68.400	SCAT50 x MLD1" - 4"	8	4	2.165	5/8" - 11	1	2.362	2.9
44.463G.72.413	SCAT50 x MLD1-1/4" - 4.13"	8.13	4.13	2.799	1"	1.25	2.795	2.7
44.463G.72.600	SCAT50 x MLD1-1/4" - 6"	10	6		5/8" - 11			3.0





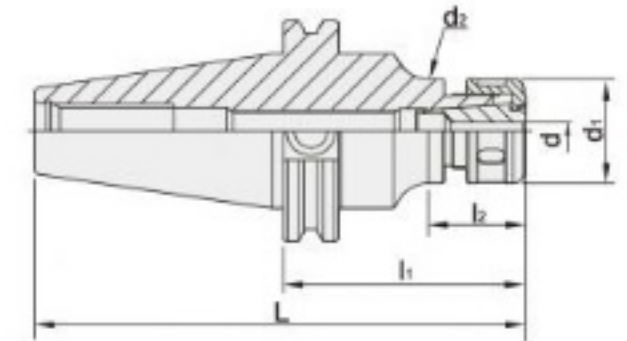
ห้างหุ้นส่วนจำกัด เลิศไพบุณ สตีล Lert Piboon Steel Ltd., Part.

SCAT / SLN



- Internal hole tolerance : H5.
- The pre-balance can reach G6.3 8,000 rpm, without an inspection report.
- The balancing grade and revolution can be done according to customer's request but the additional charge is needed.

SCAT / SKS



- Runout is within 5 μ (4D length).
- SKS Collet taper : 4°, increasing holding power, concentricity and rigidity.
- Every tool holder reaches revolution of G2.5 25,000 rpm, with an inspection report.
- The balancing grade and revolution can be done according to customer's request but the additional charge is needed.

INCHES

MODEL NO.	TYPE d ₁ - l ₁	L	l ₂	l ₃	l ₄	l ₅	d ₂	T	WEIGHT (KGS)
43.653.52.238	SCAT40 x SLN1/8" - 2.375"	5.062	0.37	-	0.787	0.8	0.69	6# - 32	1.15
43.653.53.250	SCAT40 x SLN3/16" - 2.5"	5.187	0.562	-	0.984	0.73	0.69	8# - 32	1.20
43.653.54.300	SCAT40 x SLN1/4" - 3"	5.687	0.63	-	1.38	1.28	0.78	1/4 - 28	1.15
43.653.55.300	SCAT40 x SLN5/16" - 3"					1.11	0.88	5/16 - 24	1.20
43.653.56.300	SCAT40 x SLN3/8" - 3"					0.75	1	3/8 - 24	1.20
43.653.58.300	SCAT40 x SLN1/2" - 3"					0.875	1.25	7/16 - 20	1.40
43.653.61.300	SCAT40 x SLN5/8" - 3"					0.937	1.5	1/2 - 20	1.50
43.653.64.300	SCAT40 x SLN3/4" - 3"					6.187	1	-	1.929
43.653.64.350	SCAT40 x SLN3/4" - 3.5"	1.70							
43.653.66.350	SCAT40 x SLN7/8" - 3.5"	6.687	1.063	0.875	2.36	2.06	1.88	-	2.55
43.653.68.400	SCAT40 x SLN1" - 4"								2.80
43.653.72.460	SCAT40 x SLN1-1/4" - 4.6"	7.287	1.125	1	2.56	3.12	2.5	3/4 - 16	2.90
43.653.77.450	SCAT40 x SLN1-1/2" - 4.5"	7.187				3.02			3.20
44.653.54.400	SCAT50 x SLN1/4" - 4"	8	0.63	-	1.38	1.85	0.78	1/4 - 28	3.95
44.653.55.400	SCAT50 x SLN5/16" - 4"					2.23	0.88	5/16 - 24	3.95
44.653.56.400	SCAT50 x SLN3/8" - 4"					0.781	1	3/8 - 24	4.00
44.653.58.400	SCAT50 x SLN1/2" - 4"					0.875	1.25	7/16 - 20	4.15
44.653.61.400	SCAT50 x SLN5/8" - 4"					0.937	1.5	1/2 - 20	4.30
44.653.64.400	SCAT50 x SLN3/4" - 4"					1	1.75	5/8 - 18	4.35
44.653.66.400	SCAT50 x SLN7/8" - 4"	1.063	0.875	-	2.36	2.43	1.88	-	5.30
44.653.68.400	SCAT50 x SLN1" - 4"								5.50
44.653.72.400	SCAT50 x SLN1-1/4" - 4"	1.125	1	-	2.56	2.5	2.5	3/4 - 16	5.65
44.653.72.460	SCAT50 x SLN1-1/4" - 4.6"					5.70			
44.653.77.460	SCAT50 x SLN1-1/2" - 4.6"	8.6	1.125	1	2.756	3.1	2.5	-	5.70
44.653.86.600	SCAT50 x SLN2" - 6"					5.90			

INCHES

MODEL NO.	TYPE - l ₁	L	l ₂	d	d ₁	d ₂	T	WEIGHT (KGS)
43.658.06.350	SCAT40 x SKS6 - 3.5"	6.187	1.43	0.125 ~ 0.250	0.709	0.7	M8 x 1.25P	1.05
43.658.06.400	SCAT40 x SKS6 - 4"	6.687	1.93					1.65
43.658.10.350	SCAT40 x SKS10 - 3.5"	6.187	1.62	0.125 ~ 0.375	1.181	1.08	M12 x 1.75P	1.05
43.658.10.400	SCAT40 x SKS10 - 4"	6.687	2.12					1.65
43.658.13.350	SCAT40 x SKS13 - 3.5"	6.187	2	0.125 ~ 0.500	1.378	1.29	M12 x 1.75P	1.05
43.658.13.400	SCAT40 x SKS13 - 4"	6.687	2.5					1.65
43.658.16.350	SCAT40 x SKS16 - 3.5"	6.187	2.03	0.125 ~ 0.625	1.574	1.57	M18 x 1.5P	1.35
43.658.16.400	SCAT40 x SKS16 - 4"	6.687	2.53					2.10
43.658.20.350	SCAT40 x SKS20 - 3.5"	6.187	2.04	0.125 ~ 0.750	1.909	1.9	M22 x 1.5P	1.35
43.658.20.400	SCAT40 x SKS20 - 4"	6.687	2.54					2.20
43.658.25.350	SCAT40 x SKS25 - 3.5"	6.187	2.08	0.125 ~ 1.000	2.169	2.16	M28 x 2.0P	1.35
43.658.25.400	SCAT40 x SKS25 - 4"	6.687	2.58					2.20
44.658.06.350	SCAT50 x SKS6 - 3.5"	7.5	1.72	0.125 ~ 0.250	0.709	0.7	M8 x 1.25P	3.60
44.658.06.400	SCAT50 x SKS6 - 4"	8	2.22					4.00
44.658.10.400	SCAT50 x SKS10 - 4"	8	2.22	0.125 ~ 0.375	1.181	1.06	M12 x 1.75P	3.80
44.658.10.450	SCAT50 x SKS10 - 4.5"	8.5	2.11					4.00
44.658.13.400	SCAT50 x SKS13 - 4"	8	2.11	0.125 ~ 0.500	1.378	1.29	M12 x 1.75P	3.80
44.658.13.450	SCAT50 x SKS13 - 4.5"	8.5	3.24					4.00
44.658.16.400	SCAT50 x SKS16 - 4"	8	2.05	0.125 ~ 0.625	1.574	1.57	M18 x 1.5P	4.00
44.658.16.450	SCAT50 x SKS16 - 4.5"	8.5	2.55					4.15
44.658.20.400	SCAT50 x SKS20 - 4"	8.5	2.5	0.125 ~ 0.750	1.909	1.9	M22 x 1.5P	4.00
44.658.20.450	SCAT50 x SKS20 - 4.5"		3					4.15
44.658.25.400	SCAT50 x SKS25 - 4"	8	2.16	0.125 ~ 1.000	2.169	2.16	M28 x 2.0P	4.20
44.658.25.450	SCAT50 x SKS25 - 4.5"	8.5	2.66					4.40

PULL STUD



P98

COLLET



P105

NUT



P105

SPANNER



P106

PULL STUD



P98

PRESET SCREW

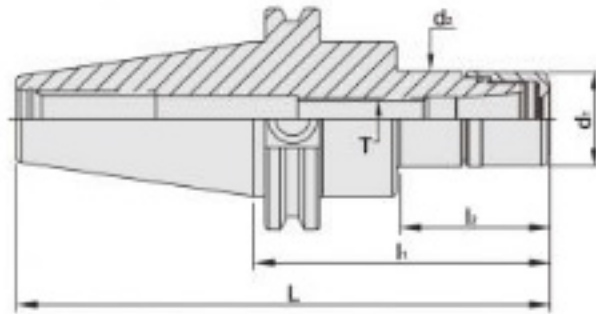


P107



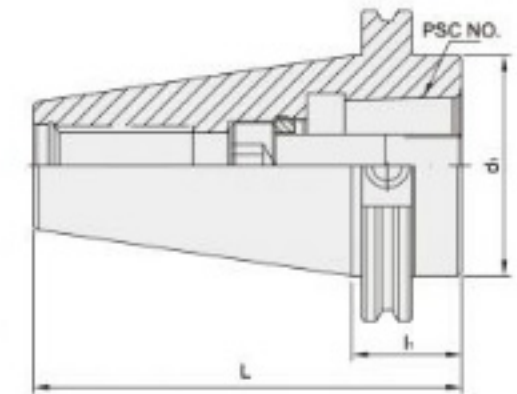
ห้างหุ้นส่วนจำกัด เลิศไพบุณย์ สตีล Lert Piboon Steel Ltd., Part.

SCAT / SK3



- The length of SK3 clamping nut is longer and the front thread of SK3 collet chuck is designed with an O-ring, which prevents coolant fluid and metal chips from getting into the tool holder.
- Applicable collet: SYIC-18302~SYIC-18310 SKS collet.
- SK3 is exchangeable with other brands of SKS collets on the market.
- Standard revolution: G2.5 25,000rpm, with an inspection report.

SCAT



INCHES

MODEL NO.	TYPE - l ₁	L	l ₂	d ₁	d ₂	T	SIZE RANGE	WEIGHT (KGS)
43.763.06.350	SCAT40 x SK306 - 3.5"	6.187	1.438	0.748	0.787	M8 x 1.25P	0.0625 ~ 0.1875	1.05
43.763.06.400	SCAT40 x SK306 - 4"	6.687	1.938					1.65
43.763.10.350	SCAT40 x SK310 - 3.5"	6.187	1.627	1.063	1.083	M12 x 1.75P	0.1250 ~ 0.3750	1.05
43.763.10.400	SCAT40 x SK310 - 4"	6.687	2.127					1.65
43.763.13.350	SCAT40 x SK313 - 3.5"	6.187	2.004	1.339	1.354	M12 x 1.75P	0.1250 ~ 0.5000	1.05
43.763.13.400	SCAT40 x SK313 - 4"	6.687	2.504					1.65
43.763.16.350	SCAT40 x SK316 - 3.5"	6.187	2.034	1.575	1.594	M18 x 1.5P	0.1250 ~ 0.6250	1.35
43.763.16.400	SCAT40 x SK316 - 4"	6.687	2.534					2.10
44.763.06.350	SCAT50 x SK306 - 3.5"	7.5	1.728	0.748	0.787	M8 x 1.25P	0.0625 ~ 0.1875	3.60
44.763.06.400	SCAT50 x SK306 - 4"	8	2.228					4.00
44.763.10.400	SCAT50 x SK310 - 4"	8	2.228	1.063	1.083	M12 x 1.75P	0.1250 ~ 0.3750	3.80
44.763.10.450	SCAT50 x SK310 - 4.5"	8.5	2.115					4.00
44.763.13.400	SCAT50 x SK313 - 4"	8	2.425	1.339	1.354	M12 x 1.75P	0.1250 ~ 0.5000	3.80
44.763.13.450	SCAT50 x SK313 - 4.5"	8.5	2.925					4.00
44.763.16.400	SCAT50 x SK316 - 4"	8	1.871	1.575	1.594	M18 x 1.5P	0.1250 ~ 0.6250	4.00
44.763.16.450	SCAT50 x SK316 - 4.5"	8.5	2.371					4.15

METRIC

MODEL NO.	TYPE	PSC NO.	L	l ₁	d ₁
43.501.32.035	SCAT40 x PSC32 - 35	PSC 32	103.249	35	44.45
43.501.40.035	SCAT40 x PSC40 - 35	PSC 40			
43.501.50.035	SCAT40 x PSC50 - 35	PSC 50			
43.501.63.090	SCAT40 x PSC63 - 90	PSC 63	158.249	90	69.85
44.501.32.035	SCAT50 x PSC32 - 35	PSC 32	136.6	35	
44.501.40.035	SCAT50 x PSC40 - 35	PSC 40			
44.501.50.035	SCAT50 x PSC50 - 35	PSC 50			
44.501.63.035	SCAT50 x PSC63 - 35	PSC 63			

INCHES

MODEL NO.	TYPE	PSC NO.	L	l ₁	d ₁
44.501.63.400	SCAT50 x PSC63 - 4"	PSC 63	7.25	4	2.75
44.501.63.600	SCAT50 x PSC63 - 6"		9.25	6	
44.501.63.800	SCAT50 x PSC63 - 8"		11.25	8	
44.501.63.100	SCAT50 x PSC63 - 10"		13.25	10	
44.501.63.120	SCAT50 x PSC63 - 12"		15.25	12	

